



Argilla  
bianca



Smalti  
colorati

## Serie Mari della costa

Smalti composti con cristalline vetrose caratterizzate dal tipico e bellissimo effetto craquelè. La collezione si compone con più di venti colori mediterranei che si ispirano alla natura ed al mare della Costa d'Amalfi. Per la loro eccezionale cromia troviamo grandi trasparenze e profondità di superfici che sulle terre cotte suscitano emozioni davvero uniche. La profondità degli smalti è esaltata dal supporto di argilla a pasta bianca.

*Glazes with crystals characterized by the craquelè typical of glass glazes, very beautiful. The collection is made up of more than twenty colours inspired by the Mediterranean nature of Amalfi Coast. Thanks to their exceptional colour we find wide transparence and dept of surface that give unique emotions on terracotta. The depth of the glazing is enhanced by the white clay body.*





Serie mari della costa \_Lilla\_ formato 20x20





**Serie mari della costa \_Grigio\_ formato 20x20**



**Serie mari della costa \_Lilla\_ formato 20x20**





Argilla bianca



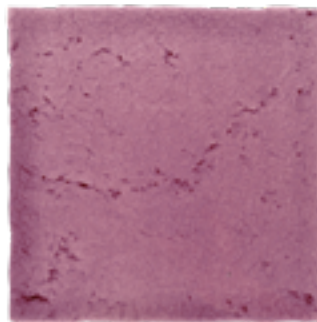
Smalti colorati



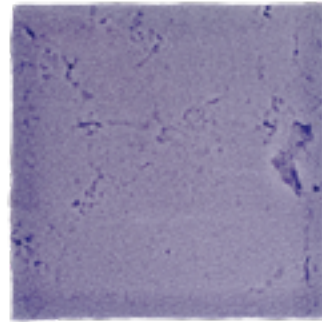
Rustico



Melanzana



Ametista



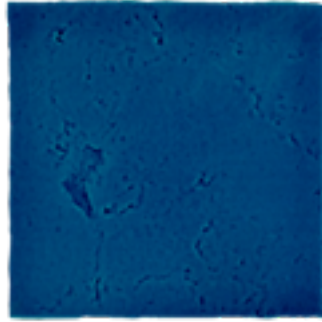
Lilla



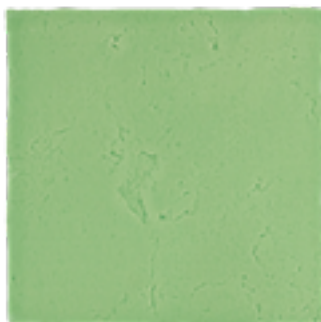
Verde acquamarina



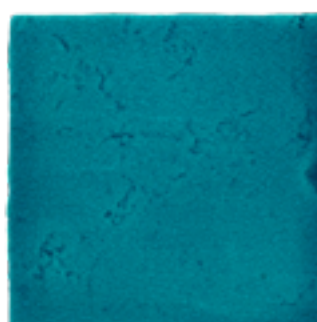
Blu cobalto



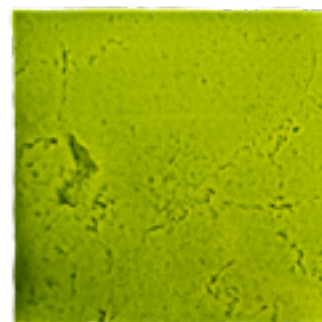
Blu marago



Sardinia



Smeraldo



Verde mela



Bianco



Cipria



Aragosta

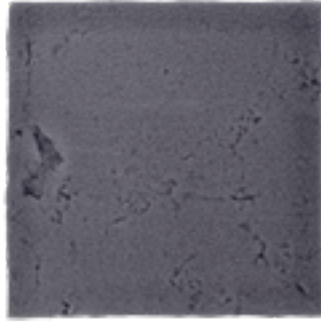


*Serie Mari della Costa*

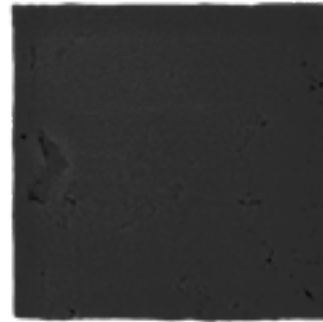
Cog Vi



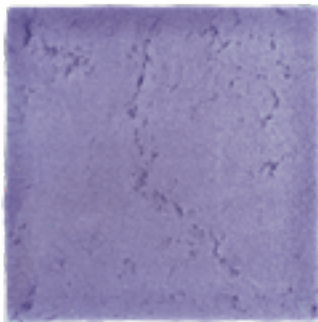
Ghiaccio



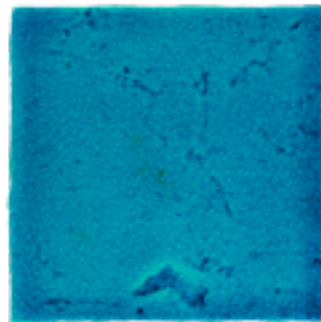
Grigio fumo



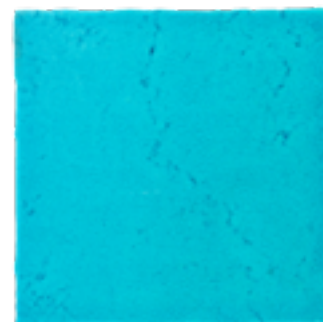
Nero grafite



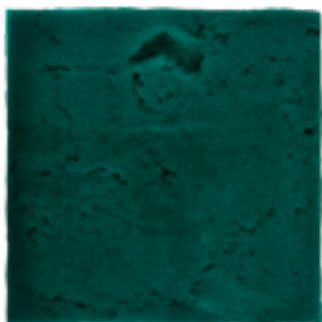
Lavanda



Turchese



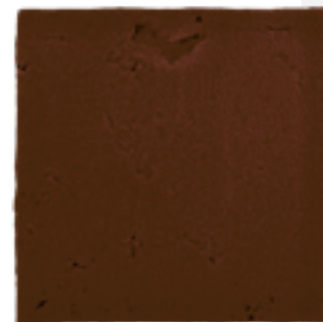
Cielo



Verde bottiglia



Pistacchio



Occhio di Tigre



Limone



Miele



Rosso

SHADES  
24